

This manual is for reference and historical purposes, all rights reserved.

This creation is copyright© by M. Butkus, NJ, U.S.A.

These creations may not be sold or distributed without the expressed permission of the producer

I have no connection with any camera company

On-line camera manual library

If you find this manual useful, how about a donation of \$2 to:

M. Butkus, 29 Lake Ave., High Bridge, NJ 08829-1701

and send your e-mail address so I can thank you.

Most other places would charge you \$7.50 for a electronic copy or

\$18.00 for a hard to read Xerox copy.

This will allow me to continue this site, buy new manuals and pay their shipping costs.

It'll make you feel better, won't it?

If you use Pay Pal, go to my web site

www.orphancameras.com and choose the secure PayPal donation icon.

KODAK RETINA

IIc and IIIc cameras
and supplementary photo aids

PRICE LIST

Kodak Retina IIc Camera	\$139.50
Kodak Retina IIIc Camera	\$190.00
Kodak Retina Curtar Lens Component, 35mm f/5.6	\$62.50
Kodak Retina Longar Lens Component, 80mm f/4	\$82.50
Kodak Retina 80mm Auxiliary Lens	\$16.50
Kodak Retina 50mm Lens Component Case	\$1.50
Kodak Retina 35-80 Optical Finder	\$17.50
Kodak Retina 50-80 Sports Finder	\$8.75
Kodak Retina Field Case, Model B	\$13.50
Kodalite Super-M Flashholder with Retina Flashholder Bracket (battery extra)	\$9.95 12.95
Kodak Filters, 32mm diameter, each	\$5.75 1.50
Kodak 8-Filter Pocket Case	\$4.95
Kodak Retina Lens Hood, Bayonet Type	\$2.50
Kodak Retina Lens Hood Extension	\$1.50
Kodak Retina Filter Compartment Case	\$3.50
Kodak Filters, 60mm diameter, each	\$15.75
Kodak Retina Lens Hood (for 80mm lens)	\$3.50
Kodak Retina Close Range and Viewfinder Kit, Model B	\$36.50
Kodak Retina Close-Up Kit, Model B	\$43.50
Kodak Retina Camera Platform, Model B	\$5.75
Kodak Retina Microscope Adapter Kit, Model B	\$59.50
Kodak Table-Top Camera Stand Kit, Model B	\$34.50

Prices are list, include Federal Tax where applicable,
and are subject to change without notice

A1-34

"Kodak" is a trademark

10-56

KODAK

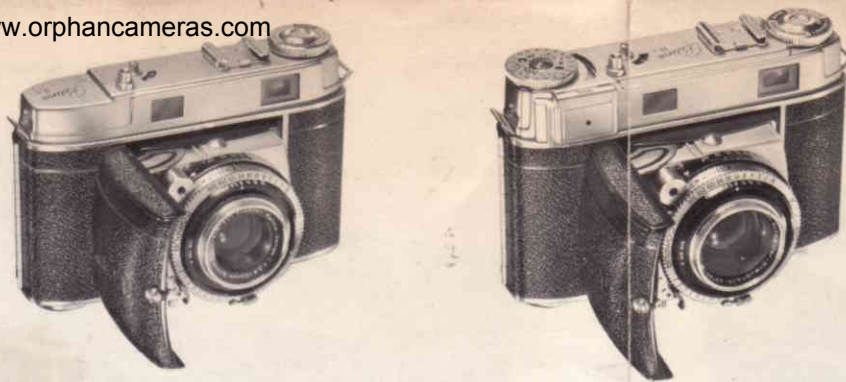
RETINA

IIc AND IIIc CAMERAS

with a versatile System of Photography



BROADWAY CAMERA EXCHANGE
2130 BROADWAY, NEW YORK 23, N. Y.
At 75th St. — TRafalgar 7-3700



For new scope, new picture opportunities

KODAK RETINA IIc and IIIc cameras

Even the most difficult picture situations are easy to master when you own a new Kodak Retina IIc or IIIc Camera. These modern miniatures are the result of over 20 years of Retina experience in miniature camera design, combined with the latest optical and mechanical advances. They offer the finest in precision workmanship, the widest range of picture possibilities, and utmost simplicity in handling. Noteworthy are the superb, high-speed Retina-Xenon C Lenses with interchangeable lens components . . . the brilliant superimposed-image type rangefinder combined with new luminous "view-frame" finder . . . the precision-made, built-in exposure meter in the Retina IIIc . . . the new Synchro-Compur light-value shutter that makes exposure settings almost automatic. These and many more refinements make the Retina cameras an ideal choice for the critical photographer — for family use as well as in business, industry, science, and other fields.



. . . plus their brilliant system of

SUPPLEMENTARY AIDS

Wherever your photographic ambitions take you, your Kodak Retina Camera will be there to serve you well. A comprehensive system of supplementary photo aids makes it easy to tackle most any field of photography. Unique interchangeable lens components, with matching optical and sports finders, provide for telephoto and wide-angle shots. For close-ups there's a close-up rangefinder with auxiliary lenses, and, for extreme close-ups, focal-frame close-up attachments. A microscope adapter extends your scope to photomicrographs. Flash unit, field case, filters, lens hoods, and other aids add to this versatile Retina system. Read over the details in this booklet. Then be sure to see these new Retina Cameras and their broad range of photo aids at your Kodak dealer's. Only then will you realize that here are top-level miniatures — and an outstanding photographic system — comparable in quality and versatility to those costing a great deal more.

FEATURE	PAGE
Design and Construction	1
Standard Lenses	2
Light-value shutter	2
Flash Sync. and Self-Timer	2
Interchangeable Lens Components	3
Exposure Meter	4
Viewfinder	4
Rangefinder	4
Rapid Wind Lever	5
Film Operation	6
Optical and Sports Finders	5
Field Case	6
Flash Unit	6
Filters and Lens Hoods	7
Close Range and Viewfinder Kit	8
Close-Up Kit	9
Table-Top Camera Stand	10
Microscope Adapter Kit	10
Price List	Back Cover



Kodak Retina IIc Camera



Kodak Retina IIIc Camera

Handsome design . . . precision construction

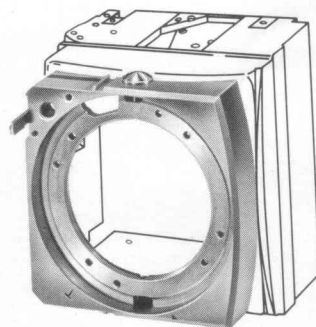
You'll find pleasure in the very appearance of the new Kodak Retina IIc and IIIc Cameras. Their handsome, continental styling, with its smooth-flowing lines, is combined with trim, neat precision. The fine satin-finish chrome metal top and beautifully fitted body covering of black grained leather add a rich, elegant look. You can tell at a glance that here are cameras made for the finest quality results and long years of dependable service.

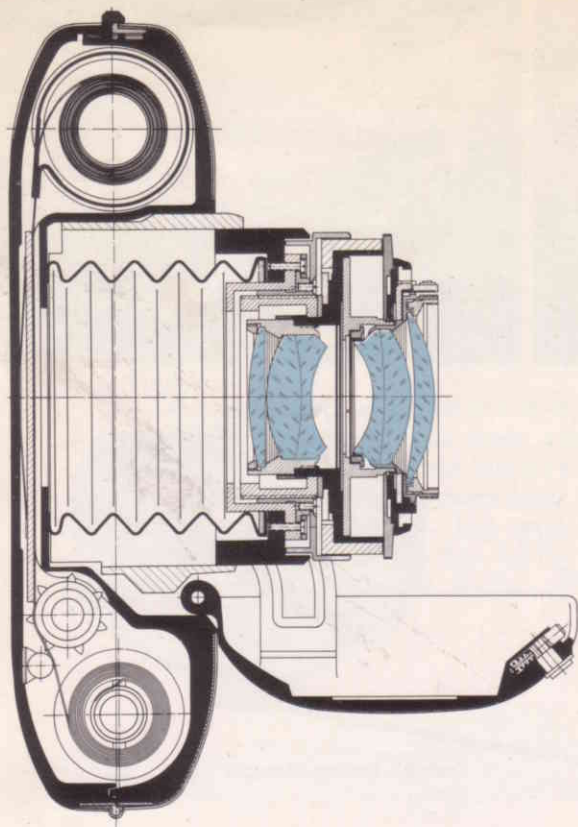
The real thrill, however, comes when you first handle one of these new Retina cameras — actually feel its exquisite craftsmanship, its fine balance, and the convenient location of its operating controls. Small and compact, it nestles securely in your hands. It's light and rugged with a sturdy die-cast aluminum-alloy body. The whole beautiful, 5-inch handful weighs only about 24



ounces. There are eyelets for a neck strap and a tripod socket. You'll find it comfortable to carry and easy to handle, wherever you go.

Outstanding, too, in the construction of these new Retina Cameras, is the rugged focusing mount. Made of a solid metal block, it supports the lens-and-shutter combination, replacing the usual bellows. As you open the camera, the mount glides smoothly into locked position, providing rigid, accurate alignment for precise performance with standard and auxiliary lens combinations. Baffles inside the metal block prevent internal light reflections. Before closing the camera, a safety lock reminds you to set the focus at "inf." The folding front serves to extend and retract the focusing mount, and to protect the standard 50mm lens and other vital operating parts when the camera is closed.





Superb-quality lenses

With their fast, high-efficiency standard lenses, the new Kodak Retina IIc and IIIc Cameras enable you to get wonderfully sharp, crisp color transparencies or black-and-white negatives under the widest variety of lighting conditions. As its standard lens, the Retina IIIc has a 6-element, coated Retina-Xenon C Lens, 50mm $f/2$; the Retina IIc has a similar $f/2.8$ lens. Focusing is accomplished by moving the entire lens as a unit, thus providing the sharpest possible pictures at all focusing distances. Lens openings for the Retina IIIc are: $f/2$, $f/2.8$, $f/4$, $f/5.6$, $f/8$, $f/11$, $f/16$, $f/22$ (same for Retina IIc except for $f/2$). The lens opening scale is convenient top-reading.

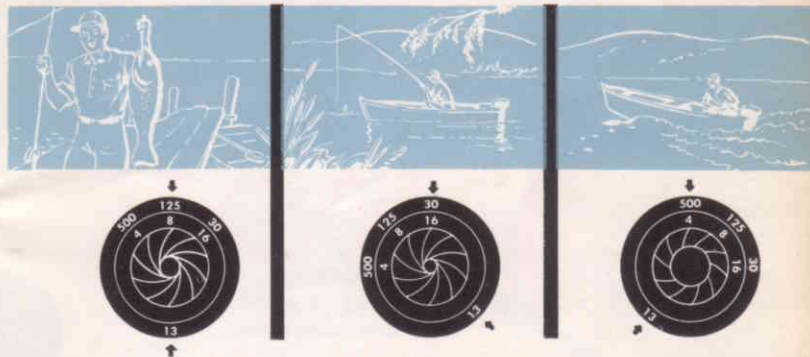
Each 50mm lens consists of two separate 3-element components. The rear component is permanently fixed behind the diaphragm and shutter while the front component can be quickly interchanged with either the 35mm wide-angle lens component or the 80mm telephoto lens component (see page 3).

The standard lenses as well as the interchangeable lens components are especially computed for the Retina IIc and IIIc Cameras. New, high-refractive optical glass, advanced lens design, and close manufacturing tolerances assure you of the highest quality. All lenses provide outstandingly brilliant definition and, because of their color correction and specially adapted coating, are particularly suitable for color photography.

New light-value shutter

You'll find picture taking easier, faster with the new Retina Cameras. The new Synchro-Compur shutter, with its simple system of "light values," makes exposure settings almost automatic. Instead of spending time determining shutter speeds for different lens openings and vice-versa, all you do is select the light-value number, which can be obtained from a handy table supplied with the Retina IIc or read directly from many up-to-date exposure meters, such as the one in the Retina IIIc.

Then, you simply transfer the light-value number to the light-value scale on the shutter. Once this setting is made, shutter speed and lens opening are linked together and, for a given light-value number, the exposure remains constant. For example, assume the light-value reading for a scene you wish to photograph is 13. For normal subjects in this scene, simply turn the shutter speed setting ring, with the aperture lever set to the light value, until $f/8$ is opposite the lens opening-shutter speed index dot. This adjusts the shutter to the correct speed, $1/125$ second. If you desire greater depth of field, setting the lens opening at $f/16$ automatically gives you the proper shutter speed of $1/30$ second. For a shot of a fast-moving subject in the scene, setting the shutter to $1/500$ second simultaneously changes the lens opening to $f/4$.



This time-and-effort-saving new Synchro-Compur shutter has ten speeds: 1-second, $1/2$, $1/4$, $1/8$, $1/15$, $1/30$, $1/60$, $1/125$, $1/250$, $1/500$, plus "B"; is automatically set when the film is advanced. Its scale is top-reading, with click stops. The light-value scale — 2 to 18 for Retina IIIc; 3 to 18 for Retina IIc — has click stops with intermediate settings. There's full flash synchronization at "M" setting for Type M bulbs and "X" setting for electronic flash at all speeds, including $1/500$. At "V" setting, a built-in self-timer, with approximately 10 seconds delay, provides for occasions when you want to be in your own picture. Smooth-operating shutter release assures steady shooting.



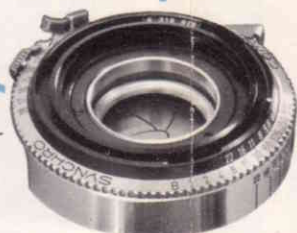


Kodak Retina-Xenon C
Lens Component, 50mm
($f/2$ or 2.8)

Kodak Retina Curtar Lens
Component, 35mm $f/5.6$



Synchro-Compur Shut-
ter



Fixed 3-element rear
lens component



Kodak Retina Longar Lens Component,
80mm $f/4$



Kodak Retina 80mm Auxiliary Lens, in
screw-in mount, attaches to front of Longar
Lens Component, extending nearest focus
point of Longar from $6\frac{1}{2}$ feet down to $3\frac{1}{2}$
feet for added versatility

Interchangeable telephoto and wide-angle lens components

Outstanding in the Retina IIc and IIIc are the interchangeable multiple-element lens components. Basis of this new Retina lens system is the universal 3-element rear lens component, permanently mounted inside the camera behind the diaphragm and shutter blades. With this design, the front 3-element component of the standard Retina-Xenon 50mm lens can be removed and interchanged with either of two front 6-element components — the Kodak Retina Curtar Lens Component, 35mm $f/5.6$, for wide-angle effects and the Kodak Retina Longar Lens Component, 80mm $f/4$, for telephoto effects. The "Longar" is especially suitable for sport scenes, candid shots of children

and animals, and distant scenics; the "Curtar," for interior, architectural, and panoramic photographs. Each is supplied in a protective storage case.

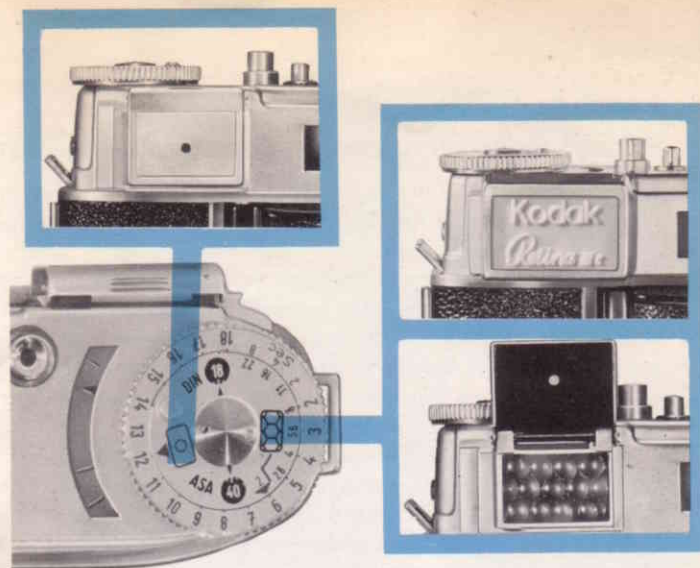
All front components attach and detach swiftly by means of bayonet fittings. Separate focusing and depth-of-field scales are provided for all three lenses. The range-finder couples automatically to the standard lens and the readings are readily transferable to the 80mm and 35mm lens scales. The Kodak 35-80 Optical Finder (described on page 5) shows the correct field of view when using the wide-angle or telephoto lens component.

This new lens system gives you a compact, folding miniature camera with the advantages of interchangeable lenses. It also provides efficient synchronization with F, M, or X flash sources, at higher shutter speeds.

Built-in exposure meter

Adding to the versatility and ease of operation of the Kodak Retina IIIc is a built-in, precision-made photo-electric exposure meter. No longer need you resort to guesswork for correct exposure settings. The meter makes them simple, sure, and easy to obtain — for shots in color or black-and-white. Its photo cell is extremely sensitive, sturdy, and shockproof, and is moisture-sealed to give you long reliable service.

The meter reads both high- and low-level reflected light; and, with a convenient snap-on mask supplied with the camera, lets you read high- and low-level incident light. Readings are in light-value numbers from 2 to 18. There are no computations to make. Just read the light-value number on the exposure meter, then set the number on the light-value scale on the shutter. Meter calibration is from 5 to 640 ASA.



High-level (bright) reflected light: meter is read with cover closed. Low-level (dull) reflected light: meter is read with cover open. Mask (upper right) snaps over meter for incident light readings.

Retina IIIc's built-in exposure meter is simple, easy to use. Just set center dial for film speed number, then turn knob till pointer matches position of needle. Read off light-value number.

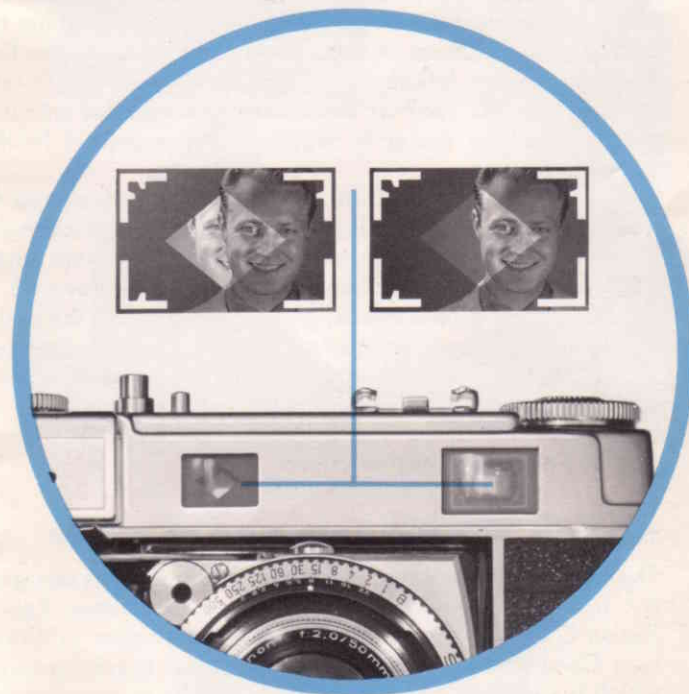
Quick, easy focusing

You're always ready for action with a Kodak Retina IIc or IIIc Camera. With the combined single-window rangefinder and viewfinder coupled to the 50mm standard lens, it takes but a few moments to sight and get your subject accurately in focus.

The enclosed eye-level viewfinder has a large, bright field of view. A brilliant optically projected "view-frame" clearly shows the exact subject area. Marks on the frame indicate parallax for subjects less than 6 feet from the camera. There's no danger of cut-off heads and similar viewing errors.

The rangefinder is of the superimposed-image type. The rangefinder field within the "view-frame" is diamond-shaped, with extra brilliance for focusing under dull light conditions. When you view the subject, and it is "out of focus," part of it is visible with double outlines in this brighter diamond-shaped area. To focus the lens, the focusing knob is turned until the outlines of the subject are superimposed.

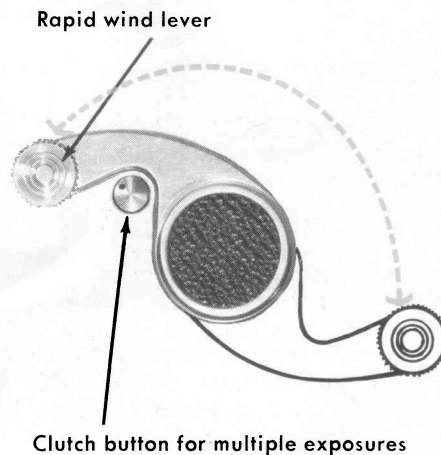
The standard 50mm lens, coupled to the rangefinder, focuses from 2½ feet to infinity. A top-reading depth-of-field scale is provided for all lens openings. The focusing scale has marks for "groups" and "scenes," and for infrared focusing. Focusing scales are also provided for use with wide-angle and telephoto lens components.



Fast action and sequence shots

Real action shots demand instant readiness. You have to be quick to catch that fleeting moment or take a number of shots in rapid succession. With the Retina IIc and IIIc the rapid winding lever enables you to handle such situations easily. Conveniently located on the bottom of the camera, it permits taking rapid picture series without removing your eye from the finder. One stroke of the lever quickly advances the film, sets the shutter, and advances the exposure counter.

An interlock system guards against double-exposures by locking the exposure release after an exposure until the rapid wind lever is actuated. However, second exposures, sometimes handy in flash photography, or intentional multiple exposures are possible by pressing the clutch button, which disengages the film advance mechanism but permits operation of the rapid wind lever to set the shutter.



Plus a brilliant system of supplementary aids

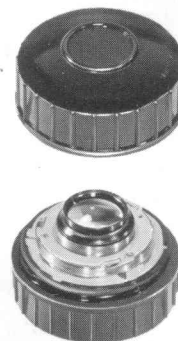
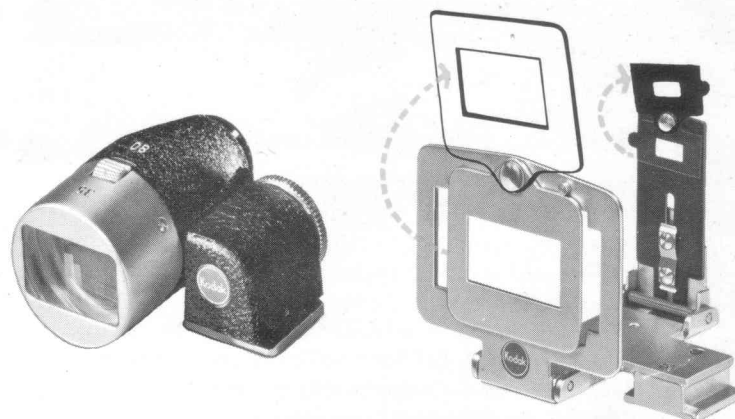
Optical and sports finders

When using the telephoto or wide-angle lens component with a Retina IIc or IIIc Camera, the Kodak Retina 35-80 Optical Finder should be used to show the correct field of view. This enclosed-type optical viewfinder fits into the clip on top of the camera. A top button instantly shifts the field from the 80mm telephoto to the 35mm wide-angle lens. A wheel on the rear of the finder provides for parallax adjustment. The finder is supplied in a compact leather case.

The Kodak Retina 50-80 Sports Finder is designed for use while shooting moving subjects and quick-changing scenes. This folding, chrome-finished, open-frame finder fits into the camera clip and shows the field covered by the 50mm and 80mm lenses. With it you can see the action taking place outside the picture area so that you can best judge the composition and anticipate the exact moment to snap the picture. The 80mm finder frames swing in or out of the 50mm frames. The finder has parallax adjustment and comes with a leather case.

50mm lens component case

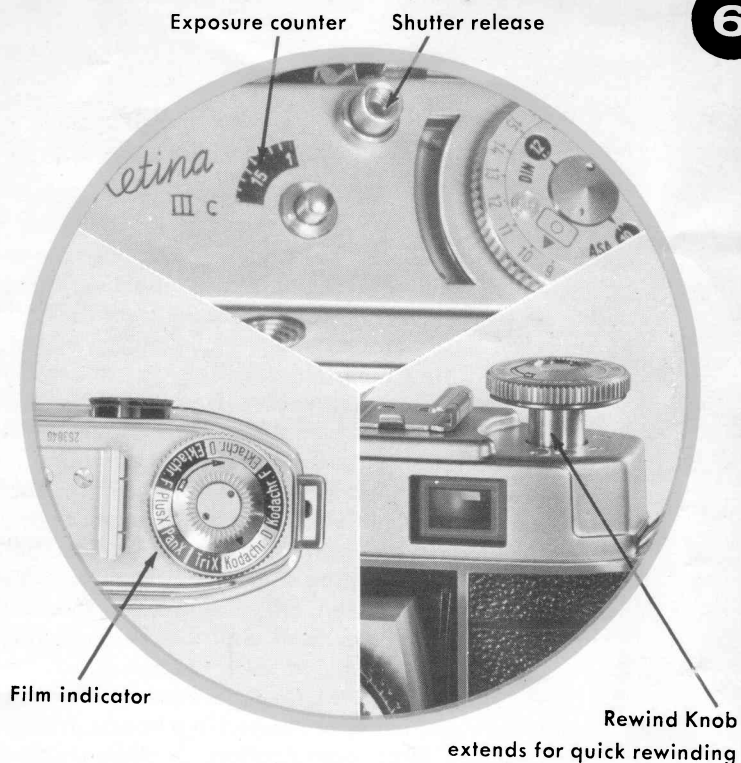
The Kodak Retina 50mm Lens Component Case is designed for storing the Kodak Retina IIc and IIIc 50mm Retina-Xenon C Lens Component whenever the Longar or Curtar Lens Component is in use. The case has a special grip-top which is used for removing the 50mm lens component.



Convenient film operation

Another novel feature of these new Retina cameras is the deducting-type exposure counter. Working in reverse from 36 or 20 down to 0, it shows the number of exposures still remaining. When the counter reaches 1, the rapid wind lever is automatically locked. There's no chance of forgetting whether you originally loaded with 20- or 36-exposures — no danger of rewinding and removing a 36-exposure magazine after taking only 20 shots or tearing the film from its spool by overwinding.

You'll find a Kodak Retina IIc or IIIc Camera quick and easy to load, too. It takes but a moment to insert the film in the take-up spool, place its edges over the 2 sprocket wheels, and drop the magazine in the supply chamber. A special film channeling plate holds the film flat, protects against film abrasion, and adds to the smoothness of the film advance. The hinged metal camera back has a snap lock with safety cover. The rewind knob can be partly withdrawn from the camera body for easier film rewinding. A handy film indicator on top of the rewind knob shows the type film loaded in the camera.



Field case

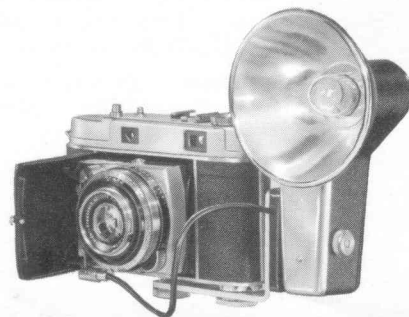
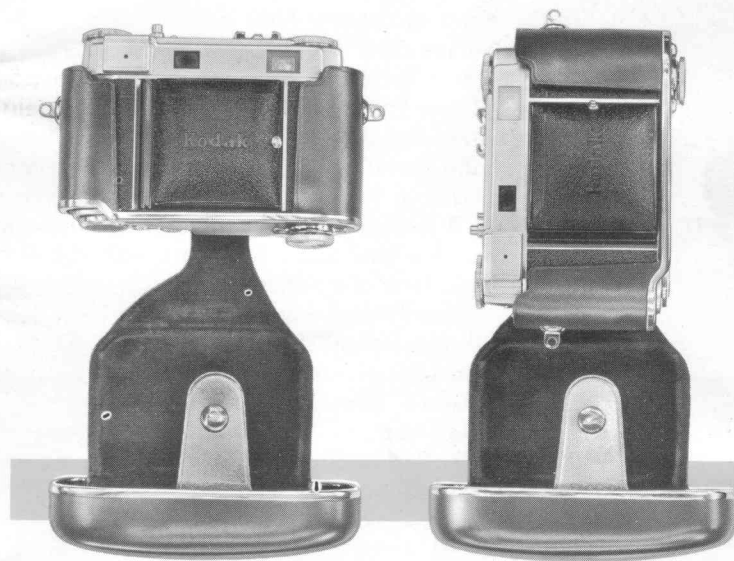
The Kodak Retina Field Case not only protects your Retina IIc or IIIc camera but also keeps it ready for instant action. When opened, every control is easily accessible. A new type snap permits the case front to swing downwards. It's never in the way, whether the camera is held horizontally or vertically. The snap also allows the case front to be completely removed if desired.

Beautifully designed, the case is made of plush-lined, rich brown leather with chrome-finished metal reinforcement. It has an adjustable neck strap and features new stitchless construction. An elastic band inside the top holds the incident light mask for the exposure meter in the Retina IIIc.

Flash unit

With the Kodalite Super-M Flashholder (with Kodak Retina Flashholder Bracket) you're always ready for picture taking, in any light and at any time. Small and compact, the entire unit fits easily into your gadget bag.

The 3-inch Lumaclad reflector is detachable. Battery-condenser powered, the unit takes low-cost M2 bulbs; also Nos. 5, 25, or 8 bulbs. A handy sliding flash calculator is on the back. A special flashholder bracket is required for the Retina IIc and IIIc because of the location of the rapid wind lever.



Filters, lens hoods, and filter cases

Filters and lens hoods, used on the right occasions, can add considerably to the beauty and effectiveness of the pictures you take. The Kodak filters, lens hoods, and filter cases described here are especially designed for the Retina IIc and IIIc Cameras.

Kodak Filters, 32mm diameter (Fig. 1), for use with the Retina-Xenon C Lens, 50mm $f/2$ or $f/2.8$ and the Retina 35mm wide-angle lens component, come complete in individual mounts, which screw directly into each lens and the component. When used with the 50mm lenses, the camera front can be closed with the filter in place. The following filters for black-and-white films are supplied: Yellow-Medium, FII; Yellow-Green, FIII; Orange, FIV; and Red, FV. Filters supplied for color films are: Kodak Skylight Filter; Kodak Photoflood Filter, No. 80B; Kodak Daylight Filter for Type F Film; and Kodak Daylight Filter for Type A Film. Each filter is individually packaged in a handy, transparent case for ready filter identification. A sliding side panel permits easy filter removal and insertion.

For added convenience in carrying the 32mm filters, there's the Kodak 8-Filter Pocket Case (Fig. 2). Only $3\frac{3}{4}$ inches in diameter and less than $\frac{7}{8}$ inch thick, it fits easily into your pocket or gadget bag. There are compartments for eight filters — 4 filters for color films on one side, and 4 filters for black-and-white films on the other. Crystal-clear plastic makes filter identification easy and the top and bottom revolve for ready filter removal and insertion.

The Kodak Retina Lens Hood, Bayonet Type (Fig. 3), for use with the Retina-Xenon Lens, 50mm $f/2$ or $f/2.8$, has a rectangular shape that is particularly effective in screening off unwanted light. It is firmly attached by means of a bayonet mount. A Kodak Retina Lens Hood Extension may be slipped over this lens hood for shots with the Retina 35mm wide-angle lens component.

The Kodak Retina Filter Compartment Case (Fig. 4) provides a compact, convenient storage and carrying case for the Kodak Retina Lens Hood and its Extension, plus three 32mm Kodak Filters. The case can be attached to the Retina Field Case strap.

For use with the Retina 80mm telephoto lens component, Kodak Filters are supplied in 60mm diameter individual mounts (Fig. 5) which screw directly into the component, with or without its Auxiliary Lens. A Yellow-Medium, FII filter is available for use with black-and-white films. Filters supplied for color films are: Kodak Skylight Filter, Kodak Daylight Filter for Type F Film, and Kodak Daylight Filter for Type A Film. The Kodak Retina Lens Hood (for 80mm lens) is of the slip-on type (Fig. 6). It also fits the 80mm Auxiliary Lens, with or without filter in place.



FIGURE

1



FIGURE

2



FIGURE

3



FIGURE
4

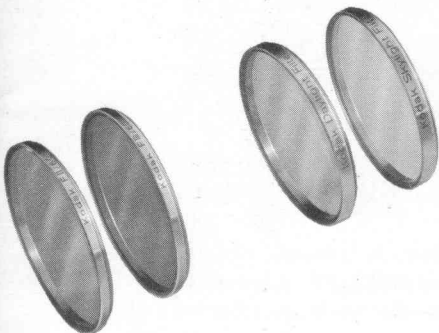


FIGURE
5



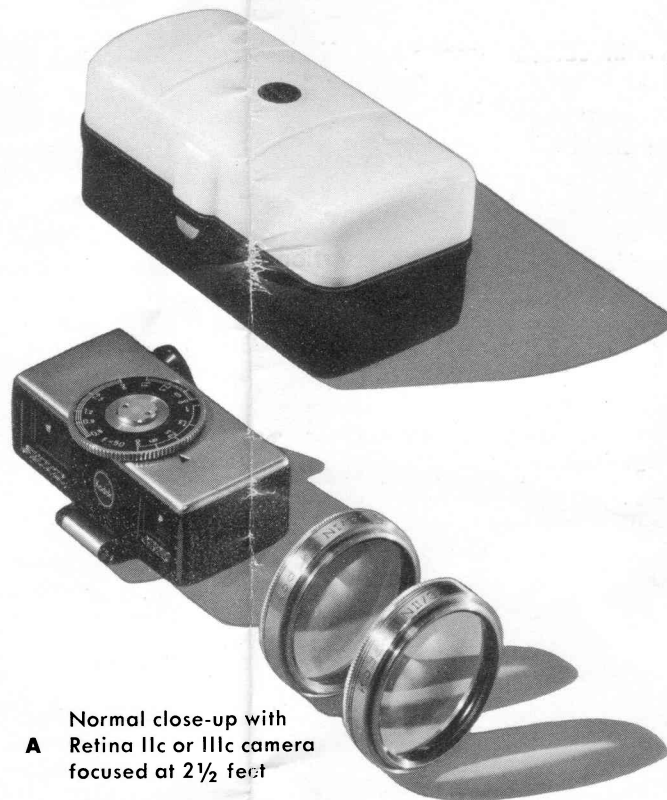
FIGURE
6

Close range and viewfinder kit

Fascinating close-ups — pictures of babies, dogs, flowers, and other small subjects — are yours with the Kodak Retina Close Range and Viewfinder Kit, Model B. With it, you can extend the focusing range of the Retina IIc or IIIc Camera from 2½ feet down to 11 5/8 inches. The Kit consists of a superimposed-type rangefinder combined with a parallax-correcting viewfinder, two auxiliary lenses, and a fitted case.

The combination range and viewfinder fits into the clip on top of the camera. It optically measures film-to-subject distances and determines the precise field covered by the 50mm lens supplemented by the N1, N2 or the combination of the N1 and N2 auxiliary lenses.

Operation is simple. You merely sight the subject and adjust the finder until the two outlines of the subject come together. The dial on top of the finder then indicates the auxiliary lens or lens combination that should be used, and the distance setting required.

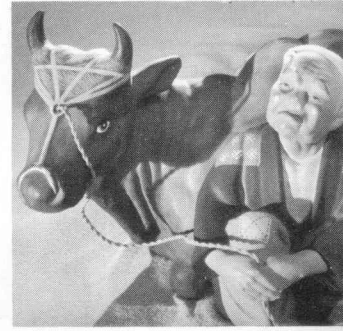
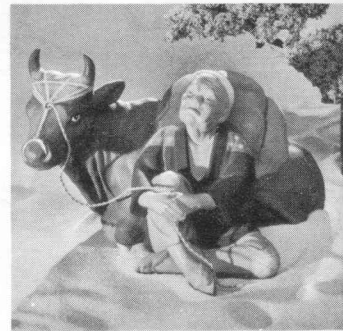
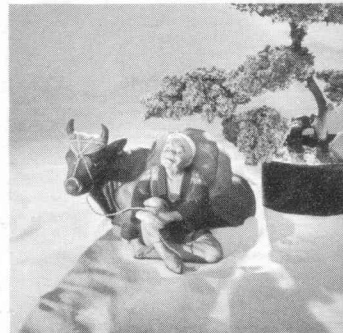
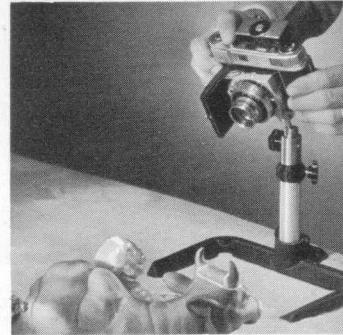


A Normal close-up with Retina IIc or IIIc camera focused at 2½ feet

B Close-up using Close Range and Viewfinder and N1 auxiliary lens

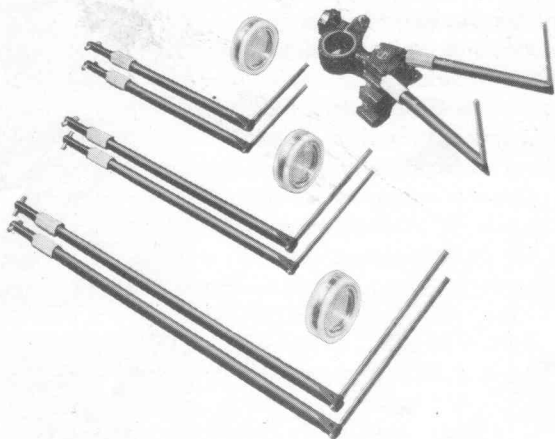
C Close-up using Close Range and Viewfinder and N2 auxiliary lens

D Close-up using Close Range and Viewfinder and N1, N2 lenses combined



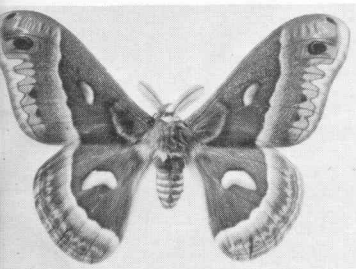
Focal-frame close-up kit

For extreme close-ups of small objects and for copying, the Kodak Retina Close-Up Kit, Model B, is used with the Retina IIc or IIIc Camera, either when hand-held or on a fixed support, such as the Kodak Table-Top Camera Stand (see page 10). The Kit consists of a field guide holder, 4 pairs of field guides, and 3 R-type auxiliary lenses used individually or in combination for picture taking from 4 fixed film-to-subject distances: 11 1/4 inches (field size, 4 x 5 3/4 inches); 9 inches (field size, 2 7/8 x 4 1/8 inches); 7 1/4 inches (field size, 2 1/6 x 3 inches); 5 15/16 inches (field size, 1 3/8 x 2 inches). This focal-frame method of close-up photography assures rapid, accurate results since there's no need to determine subject fields and distances.

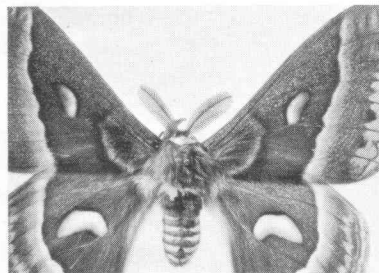


Kodak Retina Close-Up Kit, Model B, provides easy focal-frame method for extreme close-ups

A. Close-up using auxiliary lens R1:4.5 and field guide 4.5.



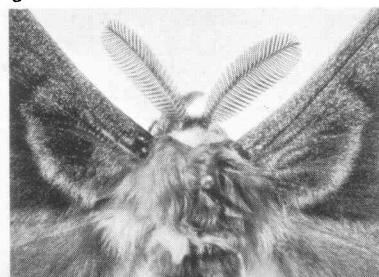
B. Close-up using auxiliary lens R1:3 and field guide 3.



C. Close-up using auxiliary lenses R1:2 and field guide 2.

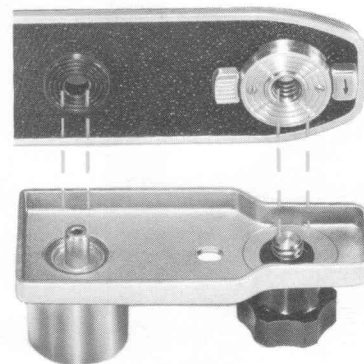


D. Close-up using auxiliary lenses R1:4.5 and R1:2 combined and field guide 1.5.



In use, the field guide holder attaches to the camera by means of the Kodak Retina Camera Platform. The appropriate pair of field guides fit into the field guide holder and serve as a frame for the object to be photographed. The auxiliary lens or lens combination corresponding to the field guide is attached to the 50mm lens, and the focusing scale set at "inf."

The Kodak Retina Camera Platform, Model B (below to right), fits the bottom of the Retina IIc and IIIc to provide a tripod socket in the center of the camera base as well as clearance for operating the film-advance lever. The Camera Platform is required for use with the Retina Close-Up Kit, and is also extremely useful with the Kodak Table-Top Camera Stand or with any tripod.



Kodak Retina Camera Platform, Model B, attaches to base of Retina IIc or IIIc to provide center-located tripod socket

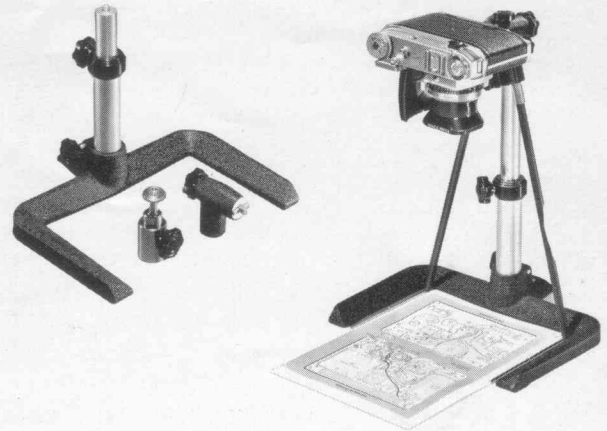


The Kodak Retina Close-Up Kit is excellent for hand-held close-up work at home or in the field

Table-top camera stand

This camera stand provides a rigid, yet flexible, support for the Retina IIc and IIIc as well as many other kinds of small cameras. It is especially useful for close-up and table-top photography where long exposures are frequently required. Used with the Kodak Retina Close-Up Kit, it is also useful in small-object and copy photography.

The Kodak Table-Top Camera Stand Kit, Model B, consists of a sturdy U-shaped base, a two-section telescoping column allowing a camera height of from a few inches to about a foot above the base, a ball-and-socket head permitting the camera to be pointed in any direction from straight up to straight down, and a right-angle head. The right-angle head serves to rigidly align the platform-supported Retina IIc or IIIc — either with or without the Close-Up Kit — relative to a field of view within the base of the stand. The kit can be readily disassembled for compact storage and easy carrying.



Used with the Kodak Table-Top Camera Stand, the Close-Up Kit converts the Retina IIc or IIIc into an efficient copy camera, especially useful for "microfile copying" of reference material

Microscope adapter

Photomicrographs are easily made with the Retina IIc or IIIc and the Kodak Retina Microscope Adapter Kit, Model B. The Kit can be used with practically all microscopes of 1-inch eyepiece diameter. It consists of the optics assembly with focusing eyepiece and detachable connection ring, diaphragm lever disengaging ring, and draw-tube clamping ring.

The connection ring secures the optics assembly to the microscope eyepiece. The optics assembly eyepiece allows visual focus and inspection of the specimen, even during exposure. The magnification on film is 1/5 of the magnification of the microscope optics used. The negative, however, can be enlarged much greater than 5 times. Consequently, photomicrographs considerably in excess of the microscope power can be made.

The diaphragm lever disengaging ring releases the coupling between the diaphragm opening and shutter speed. This is necessary since the camera must be used at its widest diaphragm opening. The draw-tube clamping ring can be used to prevent the draw-tube from slipping.

